



RR210 .. **i**



	i	T <sub>2</sub> [Nm]						n <sub>1max</sub> [min <sup>-1</sup> ]	T <sub>2max</sub> [Nm]	P <sub>t</sub> [kW]
		n <sub>2</sub> x h								
		10000 (10 <sup>4</sup> )	25000 (2.5 · 10 <sup>4</sup> )	50000 (5 · 10 <sup>4</sup> )	100000 (10 <sup>5</sup> )	500000 (5 · 10 <sup>5</sup> )	1000000 (10 <sup>6</sup> )			
<b>RR210</b>	<b>3.31</b> <b>3.91</b> <b>4.94</b> <b>5.78</b> <b>7.09</b>	2500 2480 2210 2030 1390	2360 2300 1860 1710 1160	2330 2110 1630 1500 1030	2180 1860 1490 1410 990	1610 1580 1350 1270 890	1310 1290 1250 1220 860	3500	2500 (M.../FS)  3300 (S...)	14.8 (M...) 27 (S...)  20.8 (UC) 9.9 (FS)
<b>RR210D</b>	<b>10.96</b> <b>12.94</b> <b>15.29</b> <b>19.32</b> <b>22.6</b> <b>28.55</b> <b>35.02</b> <b>40.98</b> <b>50.27</b>	2500 2500 2480 2480 2480 2210 2210 2030 1390	2360 2360 2300 2300 2300 1860 1860 1710 1160	2330 2330 2110 2110 2110 1630 1630 1500 1030	2180 2180 1860 1860 1860 1490 1490 1410 990	1610 1610 1580 1580 1580 1350 1350 1270 890	1310 1310 1290 1290 1290 1250 1250 1220 860	3500	2500 (M.../FS)  3300 (S...)	8 (M...) 14.2 (S...)  11.1 (UC) 5.9 (FS)
<b>RR210T</b>	<b>60.18</b> <b>71.09</b> <b>80.37</b> <b>89.82</b> <b>105.09</b> <b>119.95</b> <b>140.34</b> <b>177.32</b> <b>217.5</b> <b>254.49</b> <b>312.16</b>	2500 2480 2500 2480 2480 2480 2480 2210 2210 2030 1390	2360 2300 2360 2300 2300 2300 2300 1860 1860 1710 1160	2330 2110 2330 2110 2110 2110 2110 1630 1630 1500 1030	2180 1860 2180 1860 1860 1860 1860 1490 1490 1410 990	1610 1580 1610 1580 1580 1580 1580 1350 1350 1270 890	1310 1290 1310 1290 1290 1290 1290 1250 1250 1220 860	3500	2500 (M.../FS)  3300 (S...)	5.8 (M...) 10 (S...)  7.9 (UC) 4.4 (FS)
<b>RR210Q</b>	<b>279.84</b> <b>330.57</b> <b>417.65</b> <b>488.66</b> <b>557.76</b> <b>652.6</b> <b>824.52</b> <b>871.54</b> <b>1011.39</b> <b>1183.36</b> <b>1350.69</b> <b>1580.36</b> <b>1938.54</b>	2500 2480 2480 2480 2480 2480 2210 2480 2210 2030 2210 2030 1390	2360 2300 2300 2300 2300 2300 1860 2300 1860 1710 1860 1710 1160	2330 2110 2110 2110 2110 2110 1630 2110 1630 1500 1630 1500 1030	2180 1860 1860 1860 1860 1860 1490 1860 1490 1410 1490 1410 990	1610 1580 1580 1580 1580 1580 1350 1580 1350 1270 1350 1270 890	1310 1290 1290 1290 1290 1290 1250 1290 1250 1220 1250 1220 860	3500	2500 (M.../FS)  3300 (S...)	4.8 (M...) 7.9 (S...)  6.3 (UC) 3.7 (FS)



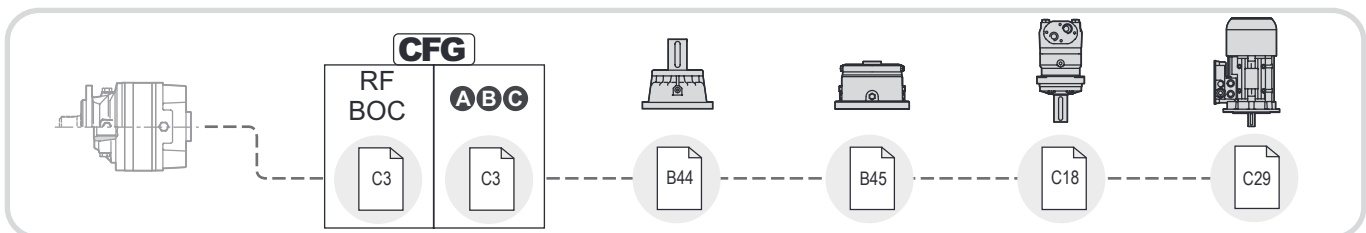
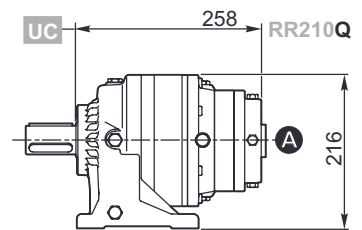
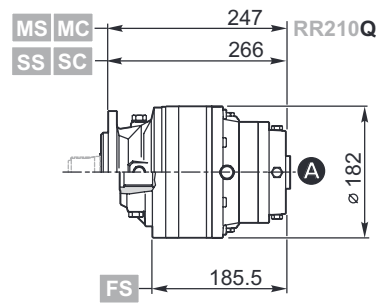
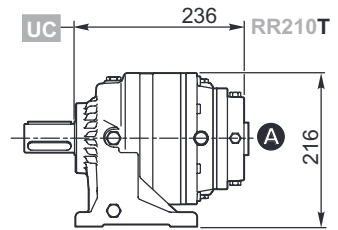
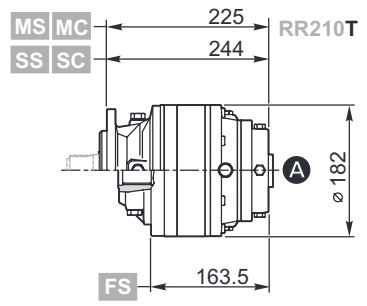
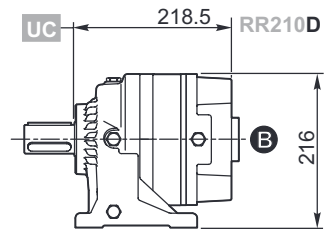
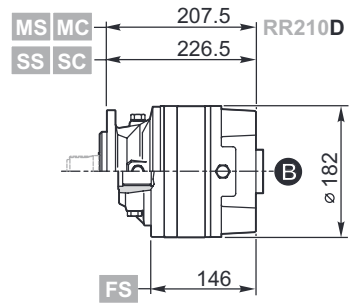
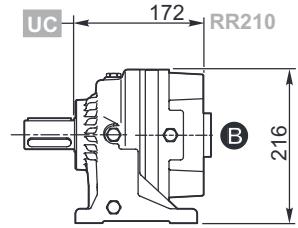
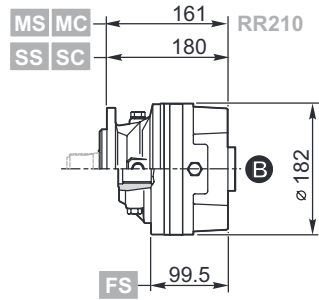
RA210 .. **i**



	i	T <sub>2</sub> [Nm]						n <sub>1max</sub> [min <sup>-1</sup> ]	T <sub>2max</sub> [Nm]	P <sub>t</sub> [kW]
		n <sub>2</sub> x h								
		10000 (10 <sup>4</sup> )	25000 (2.5 · 10 <sup>4</sup> )	50000 (5 · 10 <sup>4</sup> )	100000 (10 <sup>5</sup> )	500000 (5 · 10 <sup>5</sup> )	1000000 (10 <sup>6</sup> )			
<b>RA210</b>	<b>10.66</b> <b>12.59</b> <b>15.91</b> <b>18.61</b> <b>22.83</b> <b>29.09</b> <b>34.03</b> <b>41.75</b>	1980 2270 2210 2030 1390 1000 1140 1340	1660 1900 1860 1710 1160 830 940 1130	1460 1670 1630 1500 1030 770 890 1030	1310 1530 1490 1410 990 730 840 990	1170 1360 1350 1270 890 640 740 890	1010 1130 1250 1220 860 600 700 840	3500	2500 (M.../FS)  3300 (S...)	14 (M...) 20.1 (S...)  17 (UC) 11.4 (FS)
<b>RA210D</b>	<b>35.28</b> <b>41.67</b> <b>49.23</b> <b>62.20</b> <b>72.77</b> <b>91.94</b> <b>112.78</b> <b>131.96</b> <b>161.86</b> <b>196.71</b> <b>206.22</b> <b>241.29</b> <b>295.98</b>	2500 2500 2480 2480 2480 2210 2210 2030 1390 2030 2210 2030 1390	2360 2360 2300 2300 2300 1860 1860 1710 1160 1710 1860 1710 1160	2330 2330 2110 2110 2110 1630 1630 1500 1030 1500 1630 1500 1030	2180 2180 1860 1860 1860 1490 1490 1410 990 1410 1490 1410 990	1610 1610 1580 1580 1580 1350 1350 1270 890 1270 1350 1270 890	1310 1310 1290 1290 1290 1250 1250 1220 860 1220 1250 1220 860	3500	2500 (M.../FS)  3300 (S...)	9.8 (M...) 13.9 (S...)  11.9 (UC) 8.1 (FS)



RR210 .. i ..

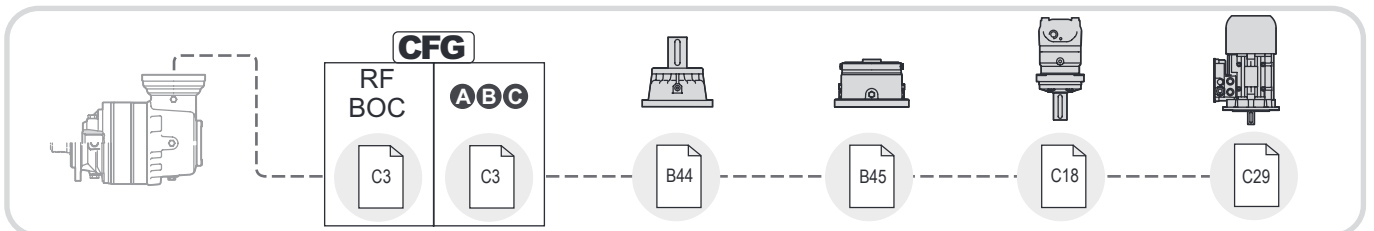
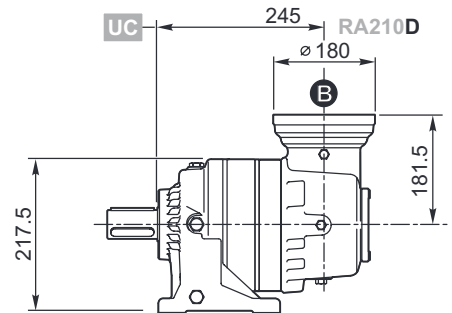
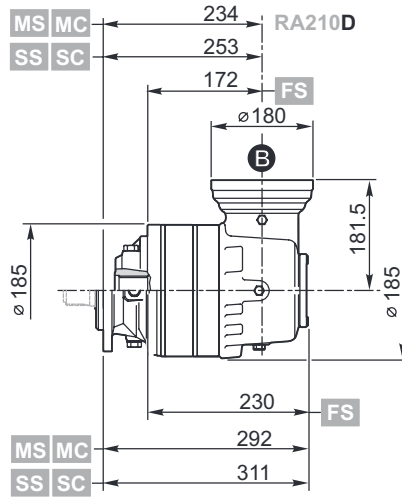
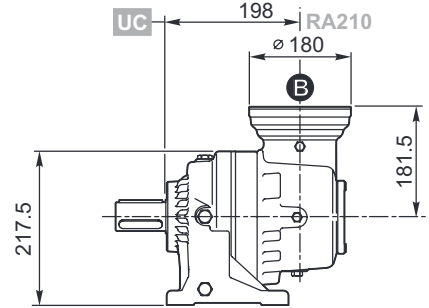
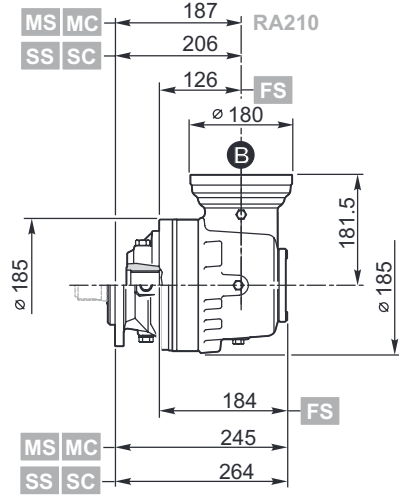


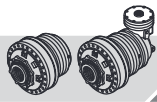


RA210 .. i ..

I

D

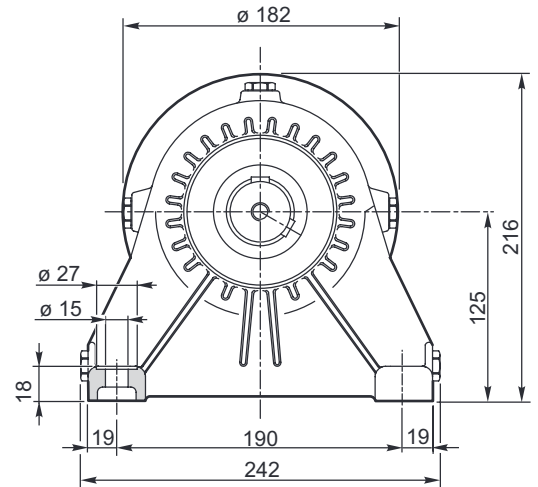
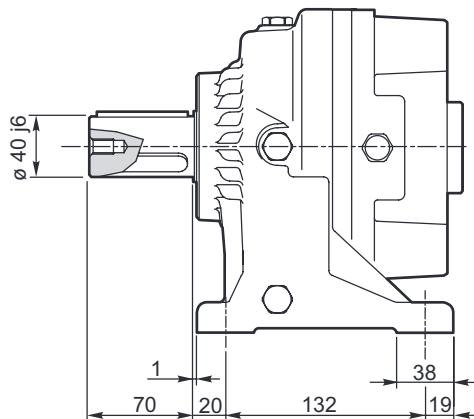
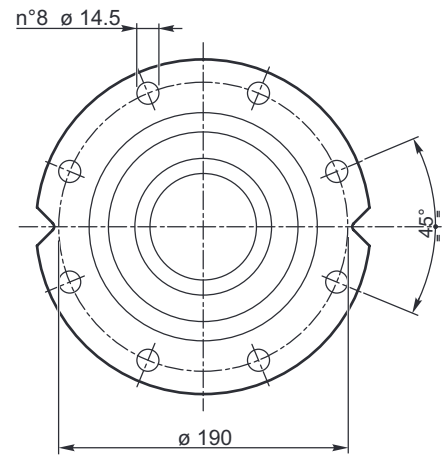
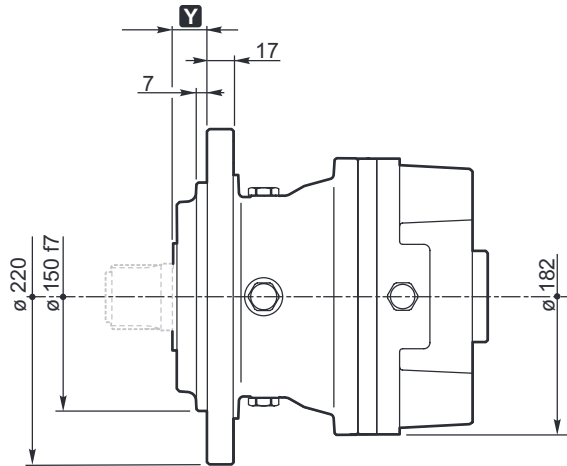
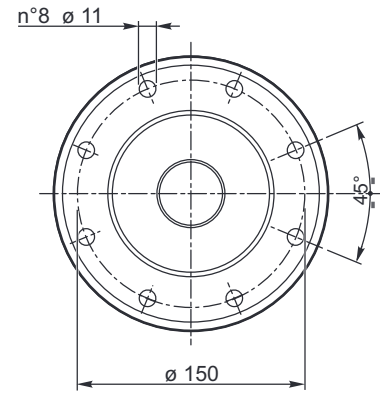
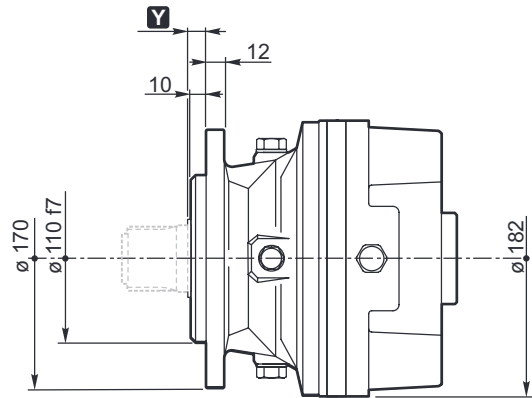




# 210

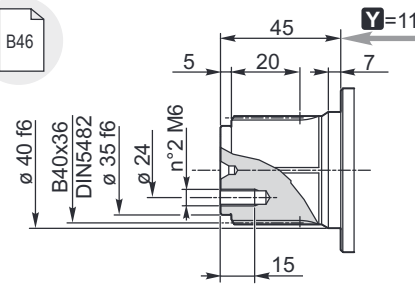
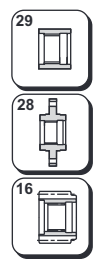
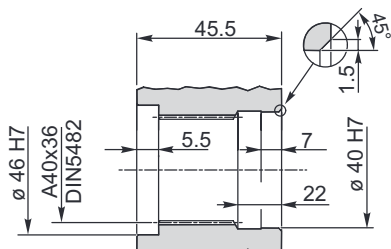
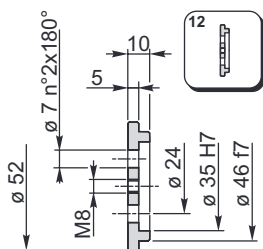
IT EN DEFRES PT

RR210	..	i	..
RA210	..		..

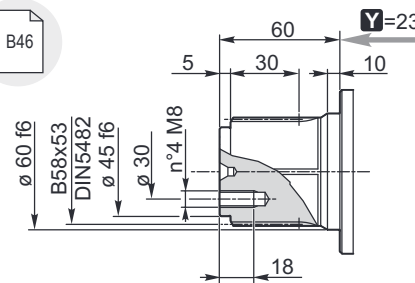
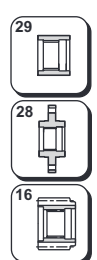
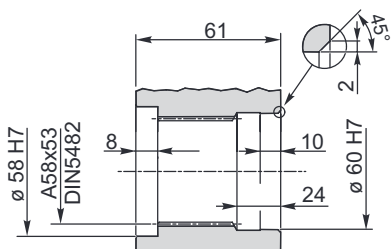
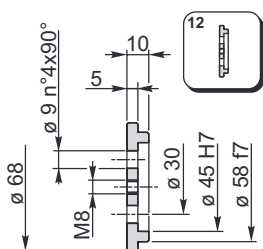




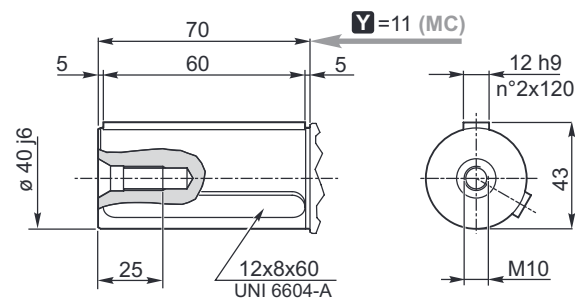
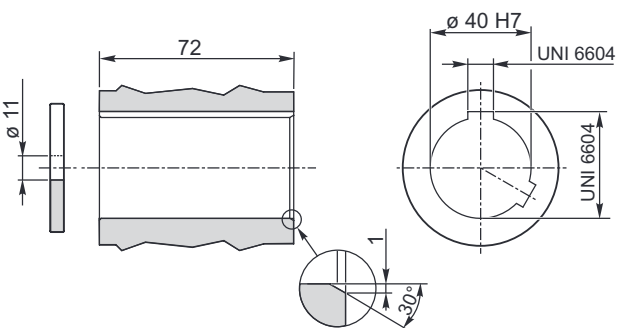
**MS**



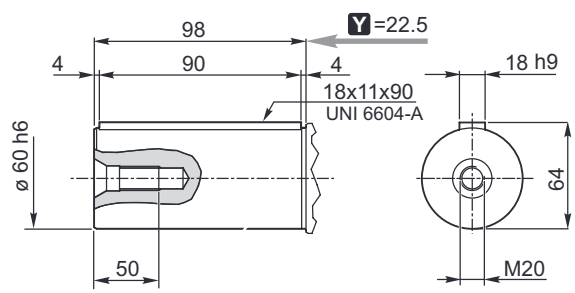
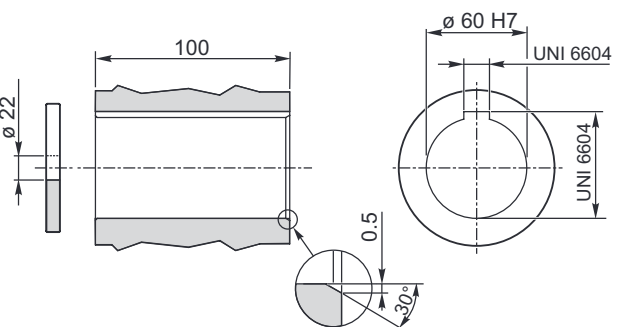
**SS**

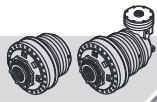


**MC**  
**UC**



**SC**



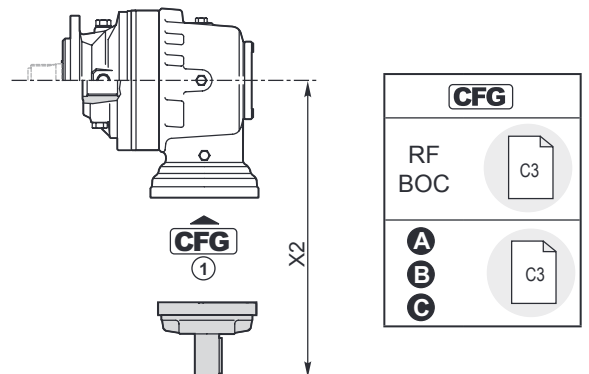
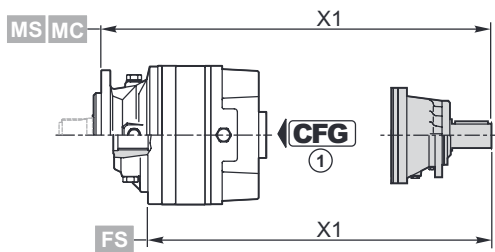
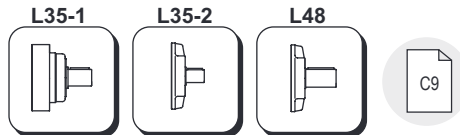
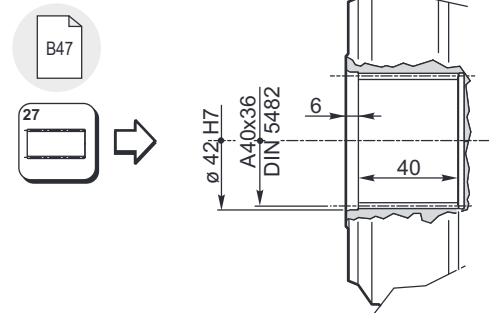
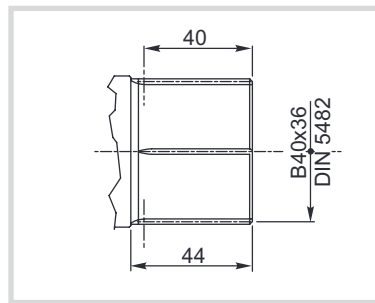
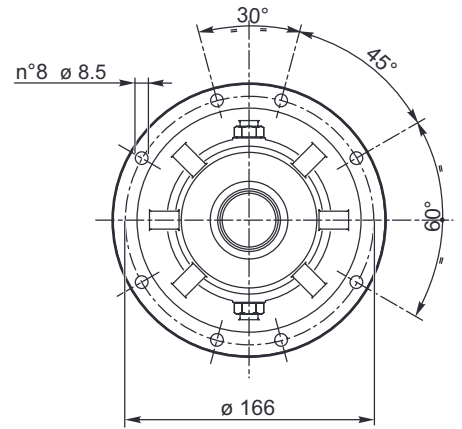
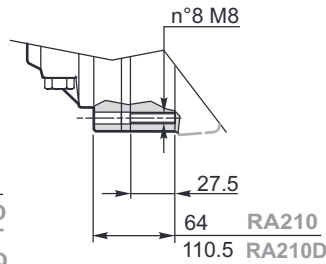
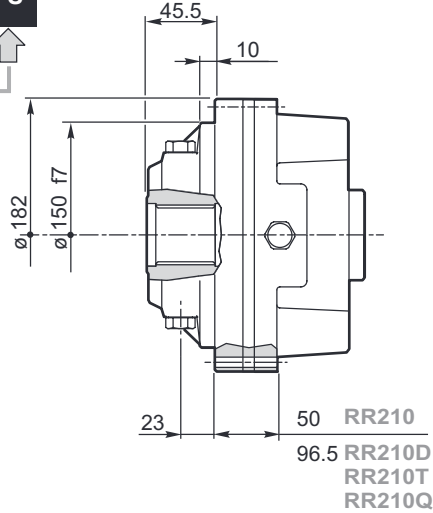


# 210

IT EN DEFRES PT

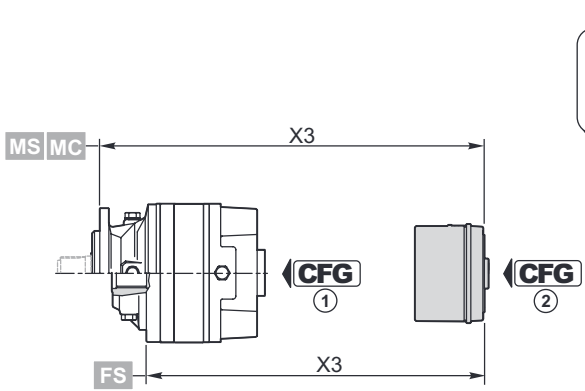
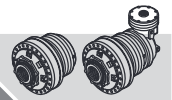
RR210	..	i	<b>FS</b>
RA210			

**FS**

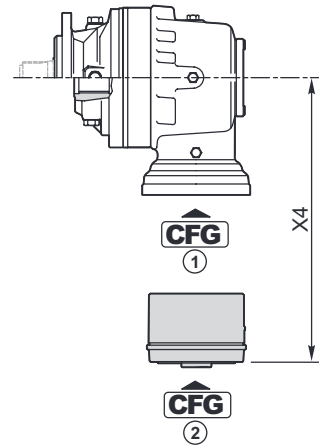


	CFG ①		code	X1
RR210	BOC	L48	154B3989M1	282.5 (M...) 221 (FS) 301.5 (S...)
RR210D	BOC	L35-2	154-2190M1	297 (M...) 235.5 (FS) 316.5 (S...)
RR210T	RF	L35-1	154B4054	313 (M...) 251.5 (FS) 332 (S...)
RR210Q	RF	L35-1	154B4054M1	335 (M...) 273.5 (FS) 354 (S...)

	CFG ①		code	X2
RA210	BOC	L35-2	154-2190M1	270.5
RA210D	BOC	L35-2	154-2190M1	270.5



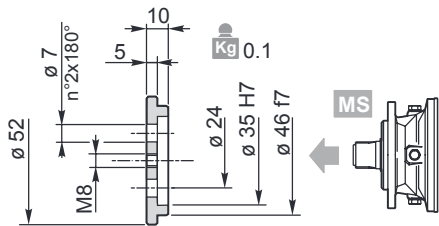
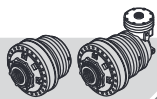
CFG	
RF BOC	C3
A	C3
B	
C	



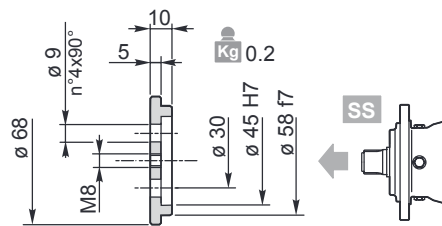
RF2/..	CFG ①	T <sub>f</sub> [Nm]	CFG ②							
			B		OMP/OMR SAE A 2B Ø 25	OMP/OMR SAE A 2B 1" 6B	OMP/OMR SAE A 4B Ø 25	OMP/OMR SAE A 4B 1" 6B	X3	
			code	X3	code	code	code	code		
RR210	RF	70	154-2838M1	199.5 (M...) 138 (FS) 218.5 (S...)	154-2863	154-2863M11	154-2635	154-2635M11	189.5 (M...) 128 (FS) 208.5 (S...)	
		140	154-2839M1		154-2864	154-2864M11	154-2636	154-2636M11		
		210	154-2840M1		154-2865	154-2865M11	154-2637	154-2637M11		
		320	154-2841M1		154-2866	154-2866M11	154-2638	154-2638M11		
		430	154-2842M1		154-2867	154-2867M11	154-2639	154-2639M11		
		600	154B8962M1		154B9665	154B9665M11	154B9666	154B9666M11		
RR210D	RF	70	154-2838M1	246 (M...) 184.5 (FS) 265 (S...)	154-2863	154-2863M11	154-2635	154-2635M11	236 (M...) 174.5 (FS) 255 (S...)	
		140	154-2839M1		154-2864	154-2864M11	154-2636	154-2636M11		
		210	154-2840M1		154-2865	154-2865M11	154-2637	154-2637M11		
		320	154-2841M1		154-2866	154-2866M11	154-2638	154-2638M11		
		430	154-2842M1		154-2867	154-2867M11	154-2639	154-2639M11		
		600	154B8962M1		154B9665	154B9665M11	154B9666	154B9666M11		

	CFG ①	T <sub>f</sub> [Nm]	CFG ②							
			A		OMP/OMR SAE A 2B Ø 25	OMP/OMR SAE A 2B 1" 6B	OMP/OMR SAE A 4B Ø 25	OMP/OMR SAE A 4B 1" 6B	X3	
			code	X3	code	code	code	code		
RR210T	RF	70	154-2832M1	291 (M...) 229.5 (FS) 310 (S...)	154-2858M1	154-2858M5			286.5 (M...) 225 (FS) 305.5 (S...)	
		140	154-2833M1		154-2859M1	154-2859M5				
		210	154-2834M1		154-2860M1	154-2860M5				
		320	154-2836M1		154-2861M1	154-2861M5				
		430	154-2837M1		154-2862M1	154-2862M5				
		600	154B8959M1		154B9663M1	154B9663M5				
RR210Q	RF	70	154-2832M3	313 (M...) 251.5 (FS) 332 (S...)	154-2858M3	154-2858M7			308.5 (M...) 247.5 (FS) 327.5 (S...)	
		140	154-2833M3		154-2859M3	154-2859M7				
		210	154-2834M3		154-2860M3	154-2860M7				
		320	154-2836M3		154-2861M3	154-2861M7				
		430	154-2837M3		154-2862M3	154-2862M7				
		600	154B8959M3		154B9663M3	154B9663M7				

	CFG ①	T <sub>f</sub> [Nm]	CFG ②							
			B		OMP/OMR SAE A 2B Ø 25	OMP/OMR SAE A 2B 1" 6B	OMP/OMR SAE A 4B Ø 25	OMP/OMR SAE A 4B 1" 6B	X4	
			code	X4	code	code	code	code		
RA210	RF	70	154-2838M12	223.8	154-2863M12	154-2863M13	154-2635M12		213.8	
		140	154-2839M12		154-2864M12	154-2864M13	154-2636M12			
		210	154-2840M12		154-2865M12	154-2865M13	154-2637M12			
		320	154-2841M12		154-2866M12	154-2866M13	154-2638M12			
		430	154-2842M12		154-2867M12	154-2867M13	154-2639M12			
		600	154B8962M12		154B9665M12	154B9665M13	154B9666M12			
RA210D	RF	70	154-2838M12	223.8	154-2863M12	154-2863M13	154-2635M12		213.8	
		140	154-2839M12		154-2864M12	154-2864M13	154-2636M12			
		210	154-2840M12		154-2865M12	154-2865M13	154-2637M12			
		320	154-2841M12		154-2866M12	154-2866M13	154-2638M12			
		430	154-2842M12		154-2867M12	154-2867M13	154-2639M12			
		600	154B8962M12		154B9665M12	154B9665M13	154B9666M12			

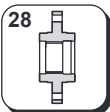


**154-3063**

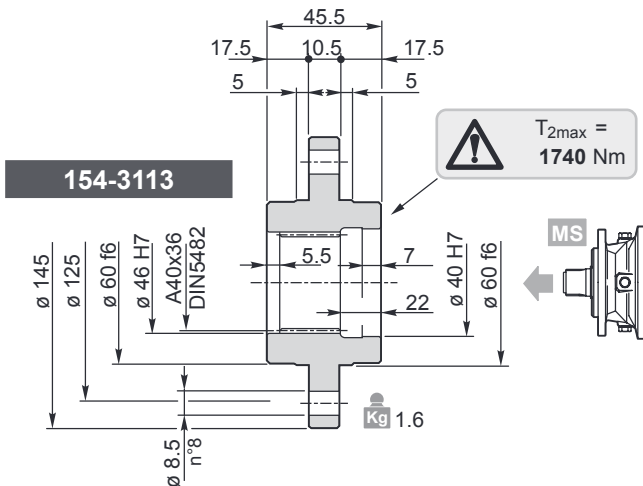


**154-3061**

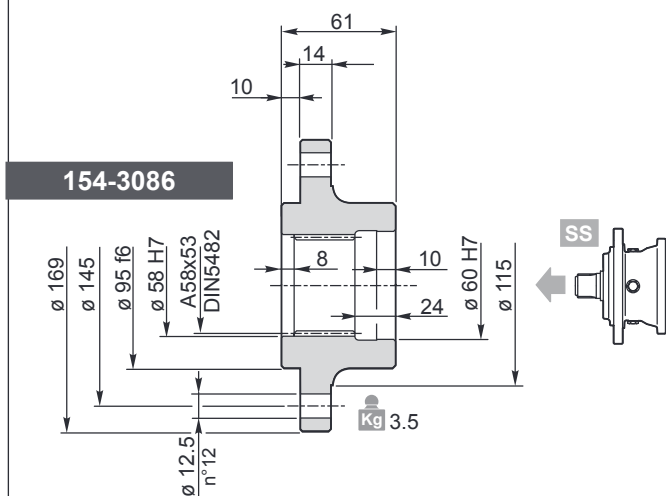
Materiale / Material / Material / Matériau / Material / Material:  
 Acciaio / Steel / Stahl / Acier / Acero / Aço  
 C40 EN 10083-1 (1.1186)



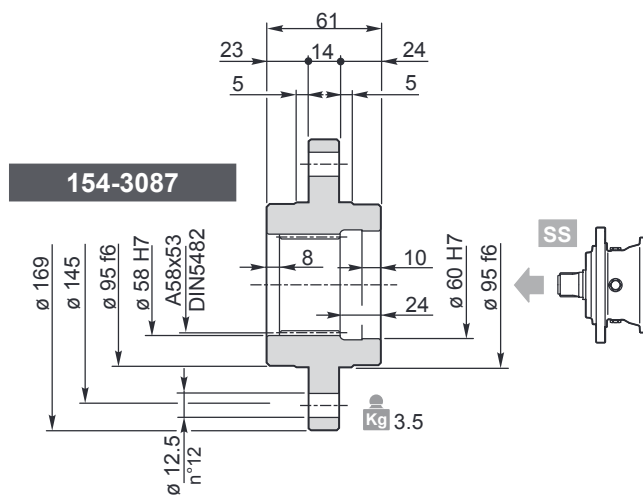
Materiale / Material / Material / Matériau / Material / Material:  
 Acciaio / Steel / Stahl / Acier / Acero / Aço EN 10083-1-C40 (1.1186)



**154-3113**



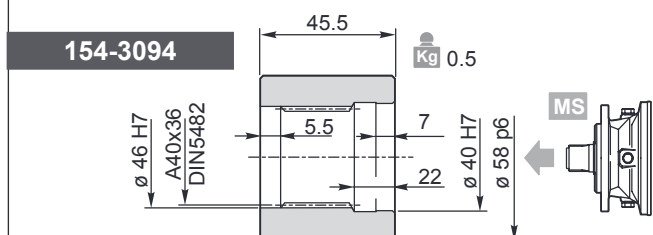
**154-3086**



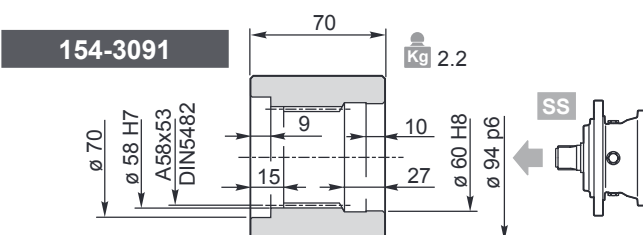
**154-3087**



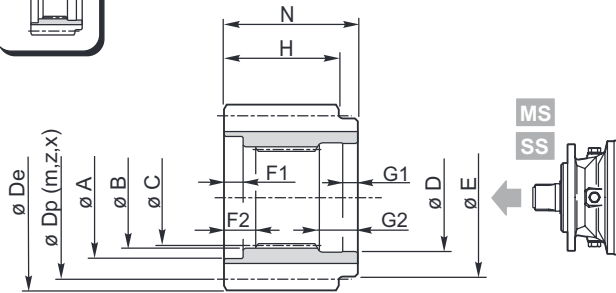
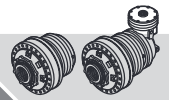
Materiale / Material / Material / Matériau / Material / Material:  
 Acciaio / Steel / Stahl / Acier / Acero / Aço 39NiCrMo3 UNI 7845 (1.6511)



**154-3094**

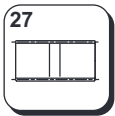


**154-3091**

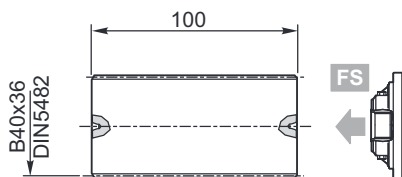


Materiale / Material / Material  
 Matériau / Material / Material  
 Acciaio / Steel / Stahl / Acier / Acero / Aço  
 39NiCrMo3 UNI 7845 (1.6511)

	A	B	C	D	E	F1	F2	G1	G2	N	m	z	x	H	Dp	De	Code
MS	53	46 F6	DIN5482 A40x36	40 F6	50	2	7.5	7	21	47.5	4	15	0.5	44.5	60	69.8	154-3072
	53	46 F6	DIN5482 A40x36	40 F6	50	2	7.5	7	21	47.5	4	32	0	44.5	128	135	154-3104
	53	46 F6	DIN5482 A40x36	40 F6	50	2	7.5	7	21	47.5	6	12	0.25	44.5	72	84.8	154-3073
	53	46 F6	DIN5482 A40x36	40 F6	50	2	7.5	7	21	47.5	5	14	0.5	44.5	70	84	154-2709
	53	46 F6	DIN5482 A40x36	40 F6	50	2	7.5	7	21	47.5	6	24	0	44.5	144	154	154-2285
	53	46 F6	DIN5482 A40x36	40 F6	50	2	7.5	7	21	47.5	8	16	0.25	44.5	128	145	154-2707
SS	70	58 H7	DIN5482 A58x53	60 H7	72	7	13	12	27	68	4.5	18	0.4444	65	81	93	154-3106
	70	58 H7	DIN5482 A58x53	60 H7	68	7	13	10	27	68	5	17	0.4	65	85	98	154-2287
	70	58 H7	DIN5482 A58x53	60 H7	68	7	13	10	27	68	5	19	0	65	95	104	154-2286
	70	58 H7	DIN5482 A58x53	60 H7	75	7	13	12	27	68	6	14	0.5	65	84	101.5	154-3082
	70	58 H7	DIN5482 A58x53	60 H7	68	7	13	10	27	68	6	15	0.25	65	90	103	154-3107
	70	58 H7	DIN5482 A58x53	60 H7	68	7	13	10	27	68	6	16	0.25	65	96	109	154-3245
	70	58 H7	DIN5482 A58x53	60 H7	78	7	13	12	27	68	8	12	0.5	65	96	118	154-3074
	70	58 H7	DIN5482 A58x53	60 H7	68	7	13	10	27	68	8	14	0	65	112	126	154-3250
	70	58 H7	DIN5482 A58x53	60 H7	78	7	13	12	27	68	8	15	0	65	120	136	154-3246
	70	58 H7	DIN5482 A58x53	60 H7	68	7	13	10	27	68	8	15	0.25	65	120	138	154-3235
	70	58 H7	DIN5482 A58x53	60 H7	78	7	13	12	27	68	8	18	0	65	144	158	154-3103
	70	58 H7	DIN5482 A58x53	60 H7	78	7	13	12	27	68	10	10	0.25	65	100	124.5	154-3075
	70	58 H7	DIN5482 A58x53	60 H7	78	7	13	12	27	68	10	12	0.475	65	120	149.5	154-3105
	70	58 H7	DIN5482 A58x53	60 H7	68	7	13	10	27	68	10	15	0	65	150	167	154-3248

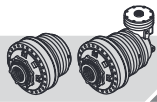


Kg 0.9



Materiale / Materiale / Material  
 Matériau / Material / Material  
 Acciaio / Steel / Stahl / Acier / Acero / Aço  
 39NiCrMo3 UNI 7845 (1.6511)

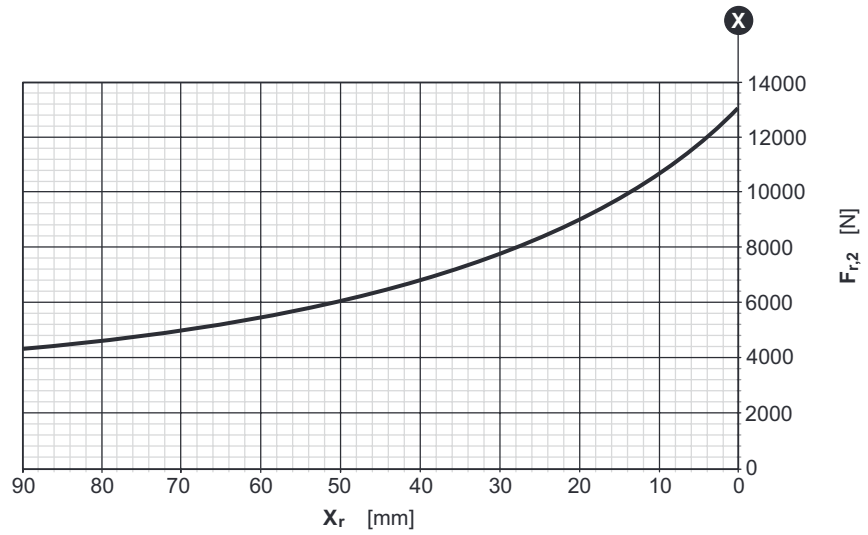
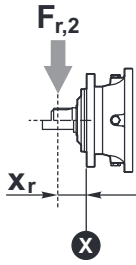
154-3050



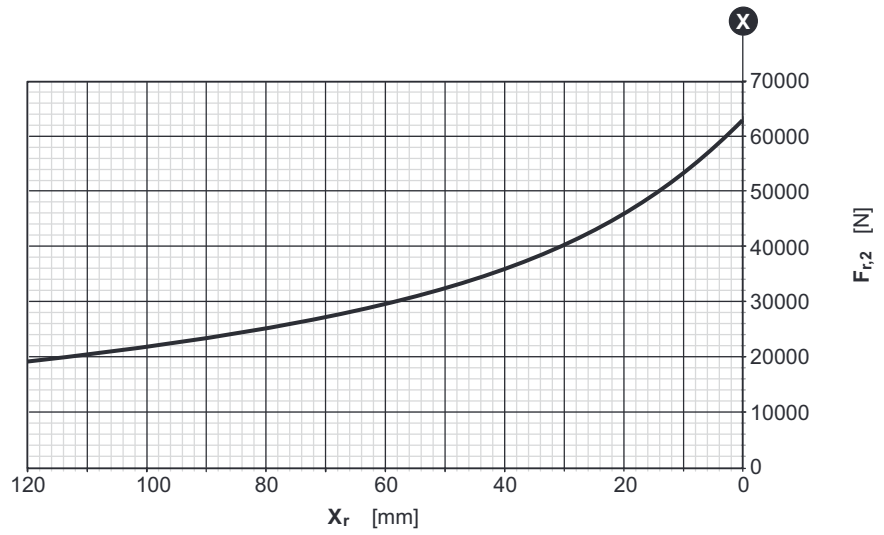
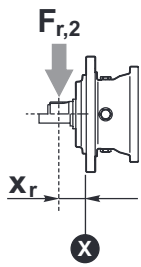
# 210

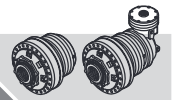
IT EN DE FR ES PT

RR	210	..	MS
RA			MC

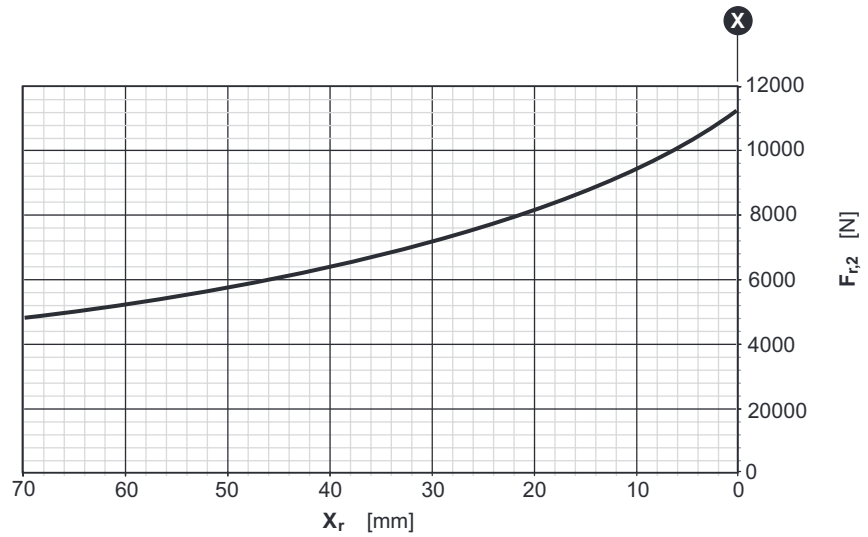
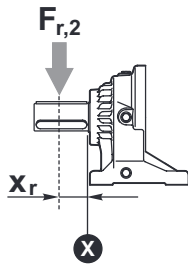


RR	210	..	SS
RA			SC





RR	210	..	UC
RA			



Fattore correttivo  $k_{r2}$  /  $k_{r2}$  Corrective coefficient / Korrekturfaktor  $k_{r2}$   
 Facteur correctif  $k_{r2}$  / Factor de corrección  $k_{r2}$  / Fator corretivo  $k_{r2}$

