

RR105 .. **i**

i	T <sub>2</sub> [Nm]						n <sub>1max</sub> [min <sup>-1</sup> ]	T <sub>2max</sub> [Nm]	P <sub>t</sub> [kW]	
	n <sub>2</sub> x h									
1/...	<b>10000</b> (10 <sup>4</sup> )	<b>25000</b> (2.5 · 10 <sup>4</sup> )	<b>50000</b> (5 · 10 <sup>4</sup> )	<b>100000</b> (10 <sup>5</sup> )	<b>500000</b> (5 · 10 <sup>5</sup> )	<b>1000000</b> (10 <sup>6</sup> )				
<b>RR105</b>	<b>3.21</b>	1220	1160	1140	1130	930	760	3500	1800	11.8 (M...) 17.9 (UC) 7.9 (FS)
	<b>4.10</b>	1160	1070	1060	1050	900	730			
	<b>5.42</b>	1030	940	850	790	720	690			
	<b>7.20</b>	760	640	560	540	490	470			
<b>RR105D</b>	<b>11.27</b>	1220	1160	1140	1130	930	760	3500	1800	6.4 (M...) 9.5 (UC) 4.7 (FS)
	<b>14.39</b>	1160	1070	1060	1050	900	730			
	<b>19.07</b>	1160	1070	1060	1050	900	730			
	<b>25.46</b>	1160	1070	1060	1050	900	730			
	<b>33.66</b>	1030	940	850	790	720	690			
	<b>44.71</b>	760	640	560	540	490	470			
<b>RR105T</b>	<b>50.51</b>	1160	1070	1060	1050	900	730	3500	1800	4.7 (M...) 6.7 (UC) 3.5 (FS)
	<b>66.92</b>	1160	1070	1060	1050	900	730			
	<b>89.37</b>	1160	1070	1060	1050	900	730			
	<b>118.39</b>	1160	1070	1060	1050	900	730			
	<b>158.11</b>	1160	1070	1060	1050	900	730			
	<b>209.02</b>	1030	940	850	790	720	690			
	<b>277.66</b>	760	640	560	540	490	470			



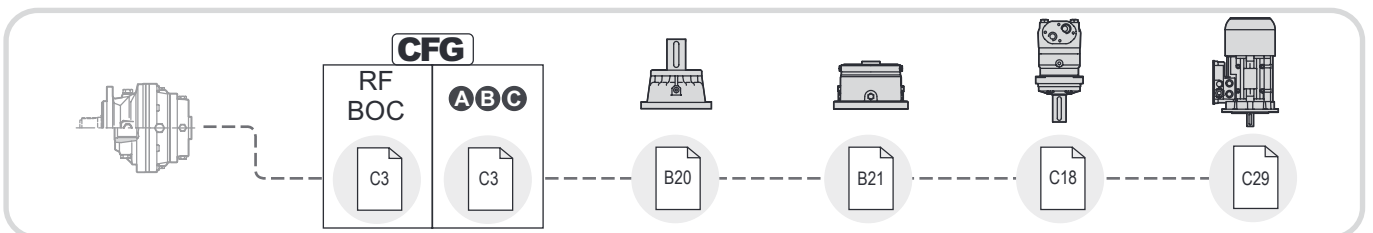
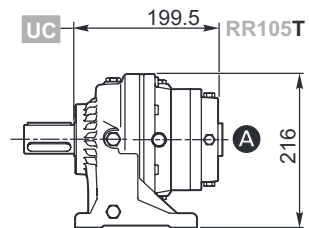
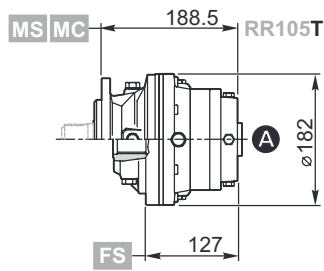
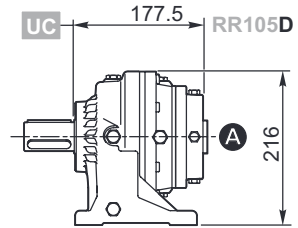
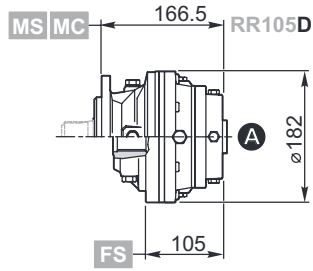
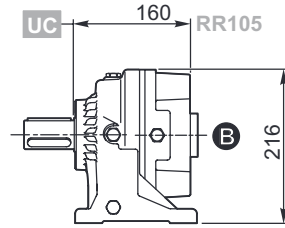
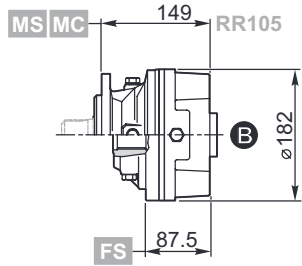
RA105 .. **i**

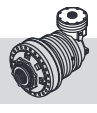


	i	T <sub>2</sub> [Nm]						n <sub>1max</sub> [min <sup>-1</sup> ]	T <sub>2max</sub> [Nm]	P <sub>t</sub> [kW]
		n <sub>2</sub> x h								
		10000 (10 <sup>4</sup> )	25000 (2.5 · 10 <sup>4</sup> )	50000 (5 · 10 <sup>4</sup> )	100000 (10 <sup>5</sup> )	500000 (5 · 10 <sup>5</sup> )	1000000 (10 <sup>6</sup> )			
<b>RA105</b>	<b>10.34</b>	1220	1160	1140	1130	930	760	3500	1800	12.5 (M...) 15.5 (UC) 10.5 (FS)
	<b>13.20</b>	1160	1070	1060	1050	900	730			
	<b>17.45</b>	1030	940	850	790	720	690			
	<b>23.18</b>	760	640	560	540	490	470			
	<b>31.91</b>	1030	890	840	790	700	660			
	<b>42.39</b>	760	640	560	540	490	470			
<b>RA105D</b>	<b>33.18</b>	1220	1160	1140	1130	930	760	3500	1800	8.7 (M...) 10.8 (UC) 7.6 (FS)
	<b>42.38</b>	1220	1160	1140	1130	930	760			
	<b>54.13</b>	1160	1070	1060	1050	900	730			
	<b>71.55</b>	1160	1070	1060	1050	900	730			
	<b>95.05</b>	1160	1070	1060	1050	900	730			
	<b>125.66</b>	1030	940	850	790	720	690			
	<b>166.92</b>	760	640	560	540	490	470			
	<b>173.81</b>	1160	1070	1060	1050	900	730			
	<b>229.77</b>	1030	940	850	790	720	690			
	<b>305.23</b>	760	640	560	540	490	470			



RR105 .. i ..

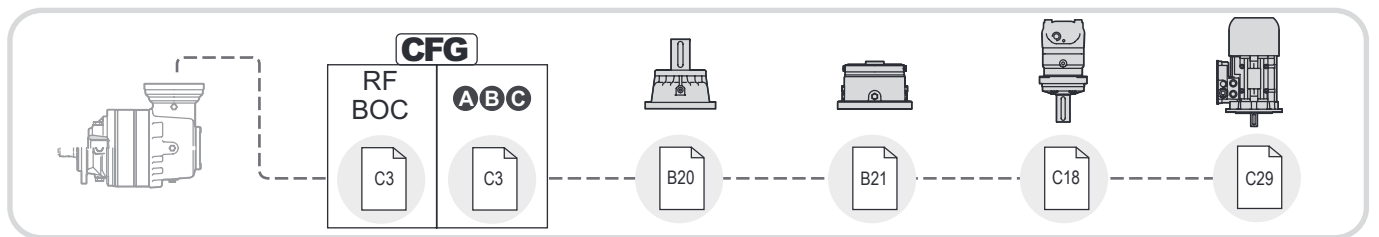
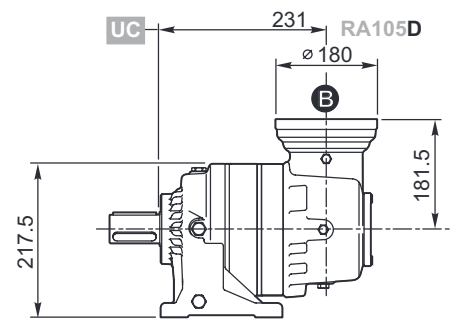
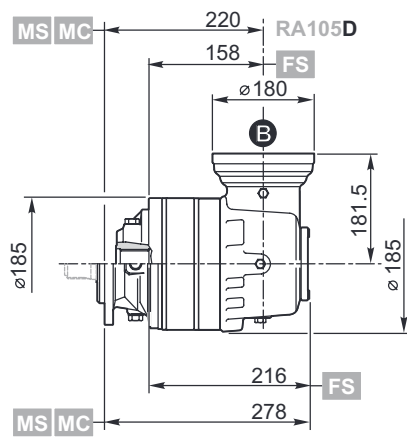
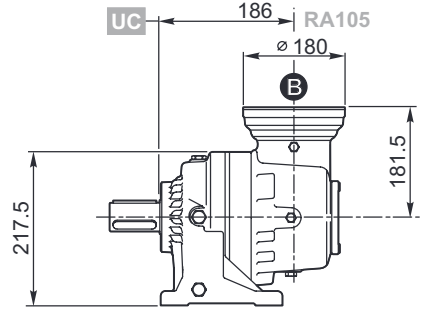
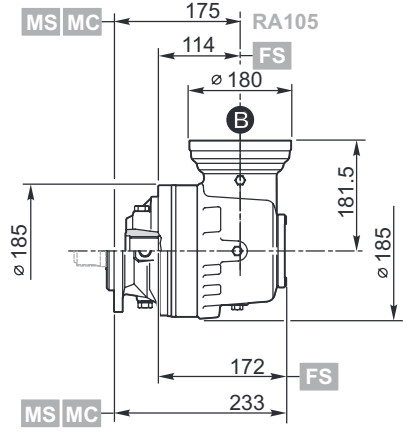


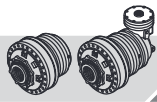


RA105 .. i ..

I

D

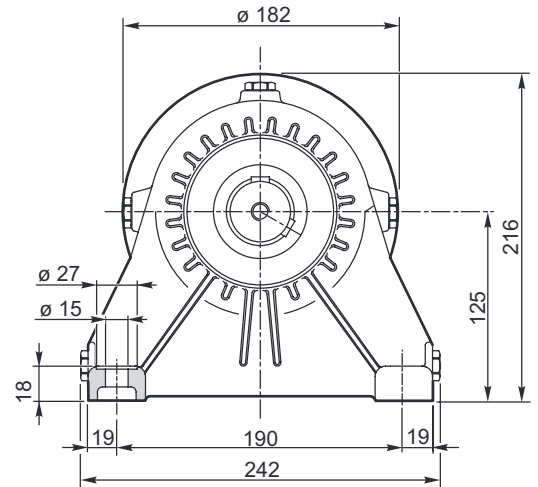
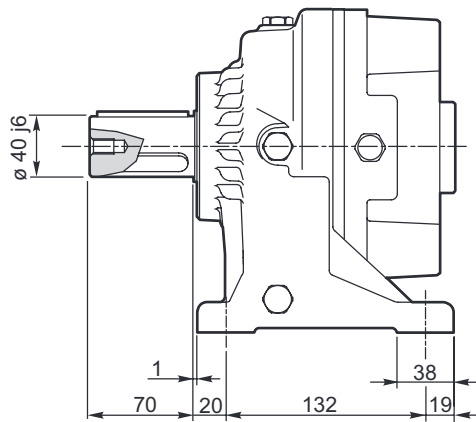
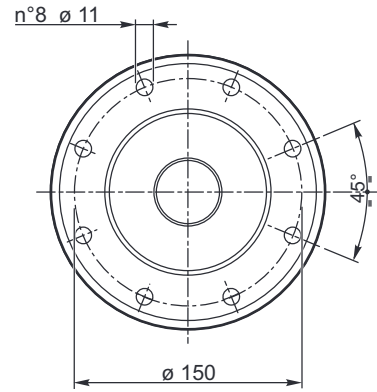
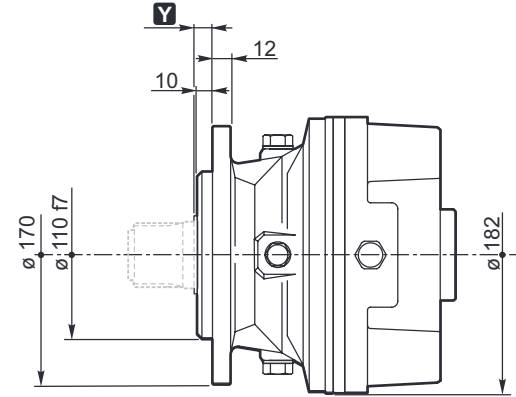




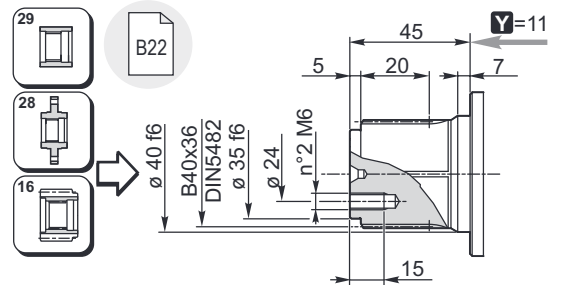
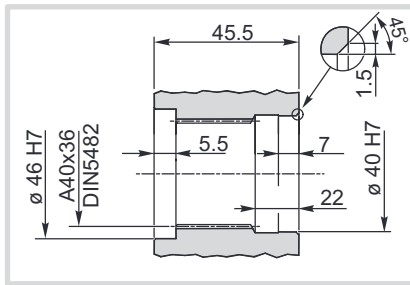
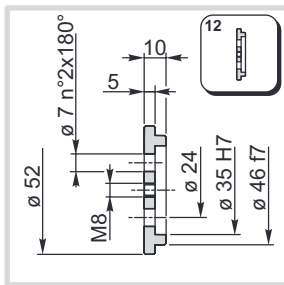
RR105  
RA105

MS  
MC

UC

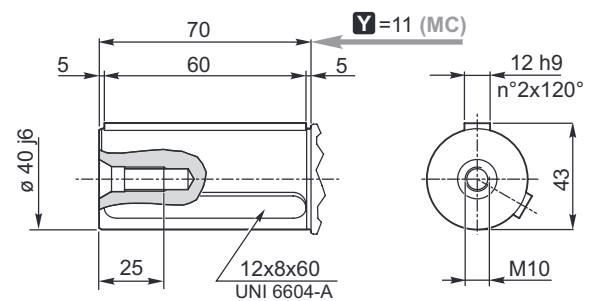
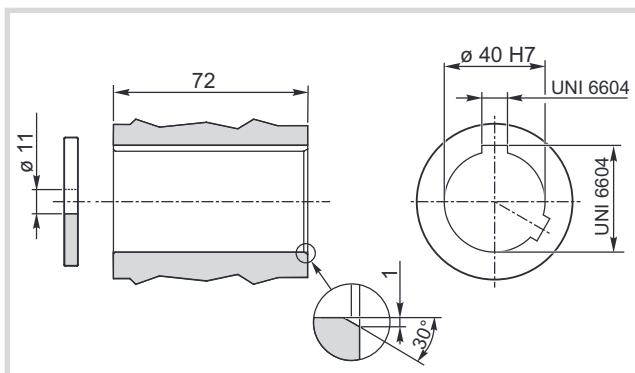


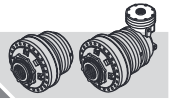
MS



MC

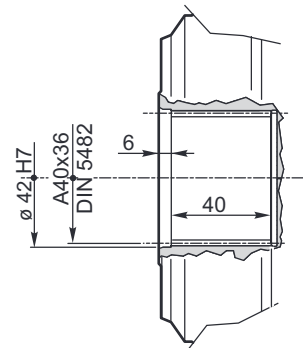
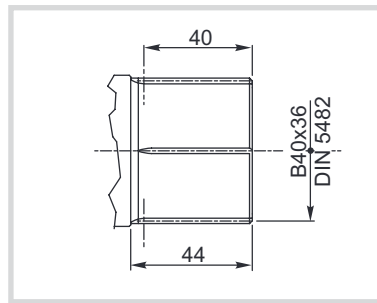
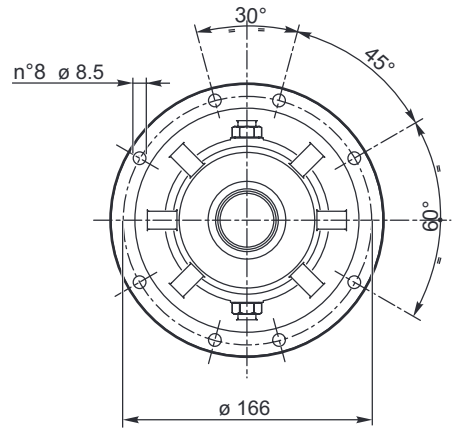
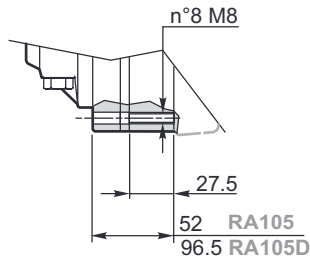
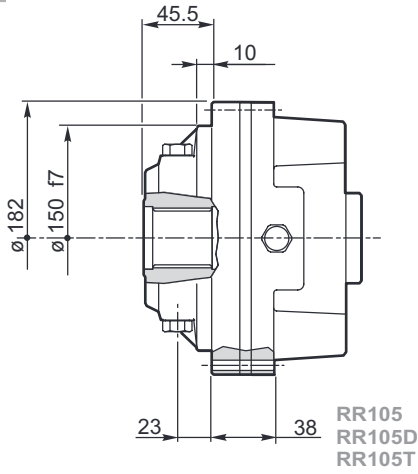
UC

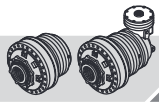




RR105	..	i	<b>FS</b>
RA105			

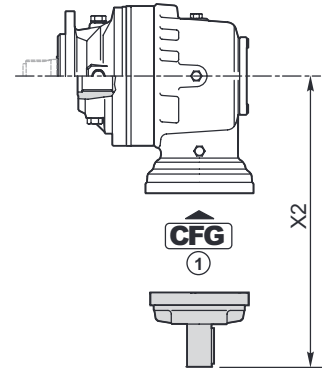
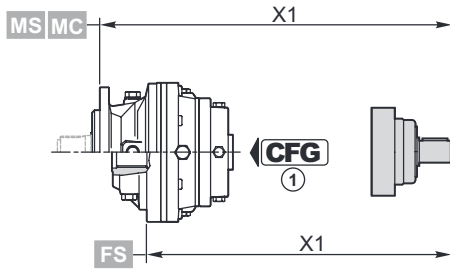
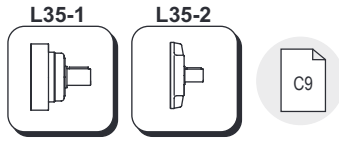
**FS**





# 105

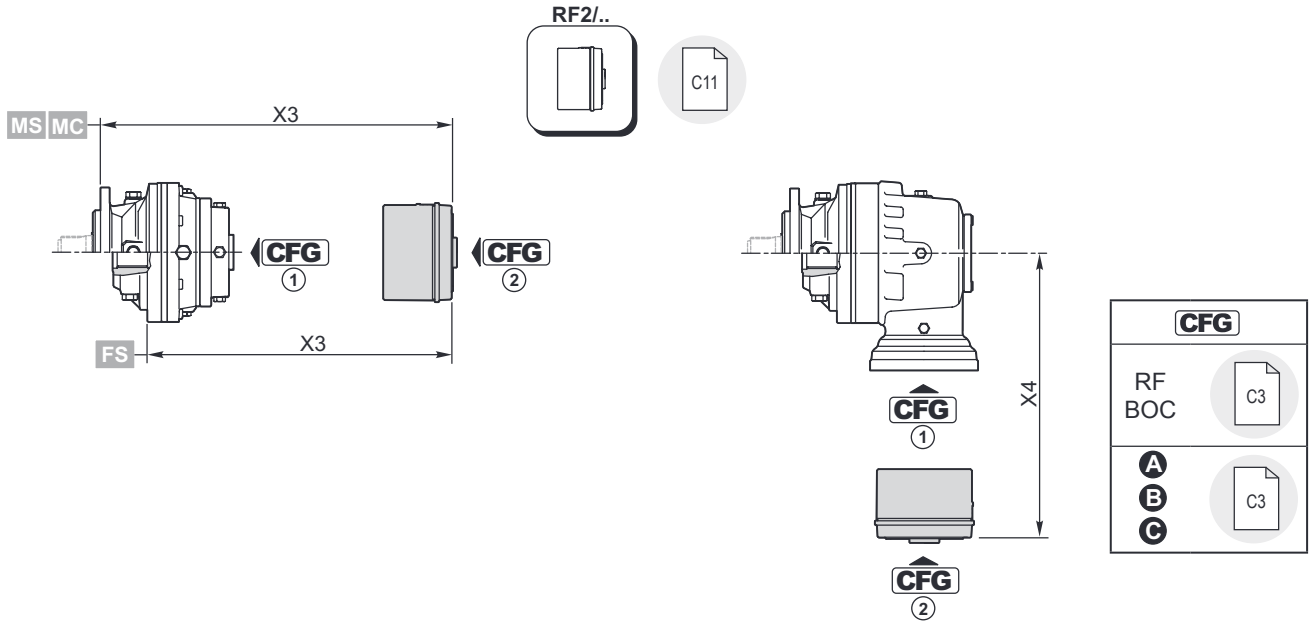
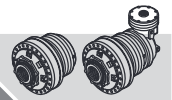
IT EN DE FR ES PT



	<b>CFG</b> ①		code	X1
<b>RR105</b>	BOC	<b>L35-2</b>	154-2190M1	238.5 (M...) 177 (FS)
<b>RR105D</b>	RF	<b>L35-1</b>	154B4054	254.5 (M...) 193 (FS)
<b>RR105T</b>	RF	<b>L35-1</b>	154B4054M1	276.5 (M...) 215 (FS)

	<b>CFG</b> ①		code	X2
<b>RA105</b>	BOC	<b>L35-2</b>	154-2190M1	270.5
<b>RA105D</b>	BOC	<b>L35-2</b>	154-2190M1	270.5

<b>CFG</b>	
RF BOC	
<b>A</b> <b>B</b> <b>C</b>	



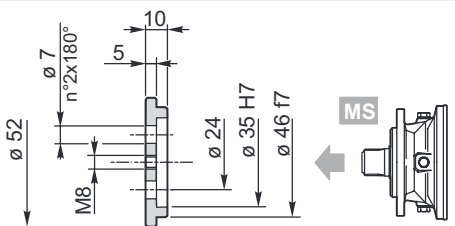
RF2/..	CFG ①	T <sub>f</sub> [Nm]	CFG ②						
			B		OMP/OMR SAE A 2B Ø 25	OMP/OMR SAE A 2B 1" 6B	OMP/OMR SAE A 4B Ø 25	OMP/OMR SAE A 4B 1" 6B	X3
			code	X3	code	code	code	code	
RR105	RF	70	154-2838M1	187.5 (M...) 126 (FS)	154-2863	154-2863M11	154-2635	154-2635M11	177.5 (M...) 116 (FS)
		140	154-2839M1		154-2864	154-2864M11	154-2636	154-2636M11	
		210	154-2840M1		154-2865	154-2865M11	154-2637	154-2637M11	
		320	154-2841M1		154-2866	154-2866M11	154-2638	154-2638M11	
		430	154-2842M1		154-2867	154-2867M11	154-2639	154-2639M11	
		600	154B8962M1		154B9665	154B9665M11	154B9666	154B9666M11	

	CFG ①	T <sub>f</sub> [Nm]	CFG ②						
			A		OMP/OMR SAE A 2B Ø 25	OMP/OMR SAE A 2B 1" 6B	OMP/OMR SAE A 4B Ø 25	OMP/OMR SAE A 4B 1" 6B	X3
			code	X3	code	code	code	code	
RR105D	RF	70	154-2832M1	232.5 (M...) 171 (FS)	154-2858M1	154-2858M5			228 (M...) 166.5 (FS)
		140	154-2833M1		154-2859M1	154-2859M5			
		210	154-2834M1		154-2860M1	154-2860M5			
		320	154-2836M1		154-2861M1	154-2861M5			
		430	154-2837M1		154-2862M1	154-2862M5			
		600	154B8959M1		154B9663M1	154B9663M5			
RR105T	RF	70	154-2832M3	254.5 (M...) 193 (FS)	154-2858M3	154-2858M7			250 (M...) 188.5 (FS)
		140	154-2833M3		154-2859M3	154-2859M7			
		210	154-2834M3		154-2860M3	154-2860M7			
		320	154-2836M3		154-2861M3	154-2861M7			
		430	154-2837M3		154-2862M3	154-2862M7			
		600	154B8959M3		154B9663M3	154B9663M7			

	CFG ①	T <sub>f</sub> [Nm]	CFG ②						
			B		OMP/OMR SAE A 2B Ø 25	OMP/OMR SAE A 2B 1" 6B	OMP/OMR SAE A 4B Ø 25	OMP/OMR SAE A 4B 1" 6B	X4
			code	X4	code	code	code	code	
RA105	RF	70	154-2838M12	223.8	154-2863M12	154-2863M13	154-2635M12		213.8
		140	154-2839M12		154-2864M12	154-2864M13	154-2636M12		
		210	154-2840M12		154-2865M12	154-2865M13	154-2637M12		
		320	154-2841M12		154-2866M12	154-2866M13	154-2638M12		
		430	154-2842M12		154-2867M12	154-2867M13	154-2639M12		
		600	154B8962M12		154B9665M12	154B9665M13	154B9666M12		
RA105D	RF	70	154-2838M12	223.8	154-2863M12	154-2863M13	154-2635M12		213.8
		140	154-2839M12		154-2864M12	154-2864M13	154-2636M12		
		210	154-2840M12		154-2865M12	154-2865M13	154-2637M12		
		320	154-2841M12		154-2866M12	154-2866M13	154-2638M12		
		430	154-2842M12		154-2867M12	154-2867M13	154-2639M12		
		600	154B8962M12		154B9665M12	154B9665M13	154B9666M12		



Kg 0.1



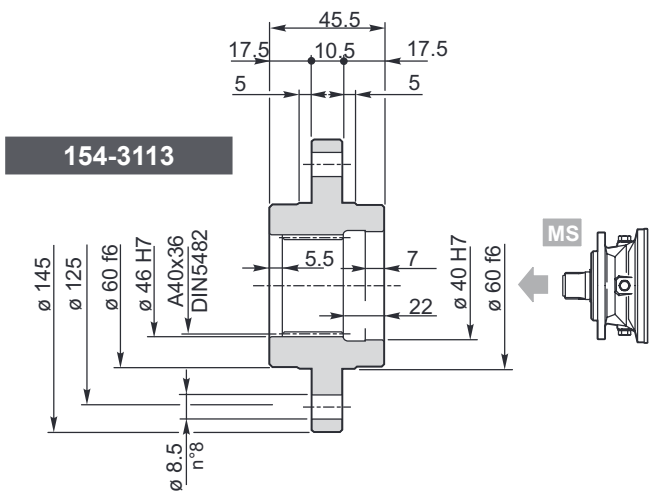
**154-3063**

Materiale / Material / Material / Matériau / Material / Material:  
 Acciaio / Steel / Stahl / Acier / Acero / Aço  
 C40 EN 10083-1 (1.1186)



Kg 1.6

Materiale / Material / Material / Matériau / Material / Material:  
 Acciaio / Steel / Stahl / Acier / Acero / Aço EN 10083-1-C40 (1.1186)



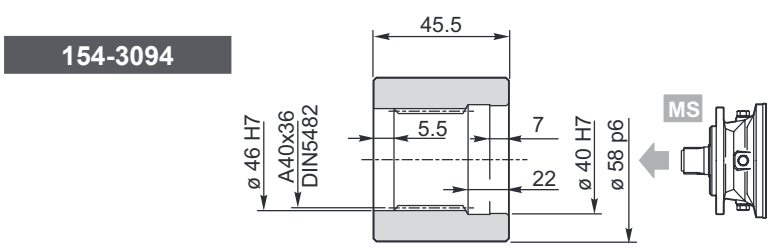
**154-3113**

$T_{2max} = 1740 \text{ Nm}$

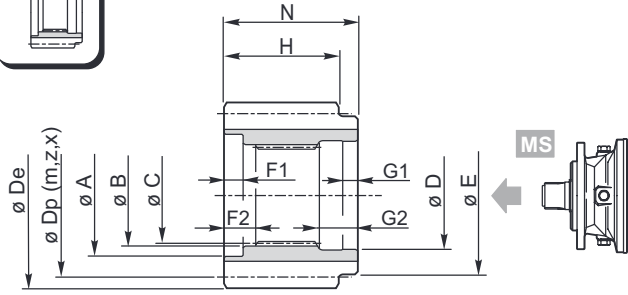
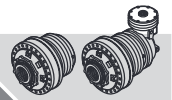


Kg 0.5

Materiale / Material / Material / Matériau / Material / Material:  
 Acciaio / Steel / Stahl / Acier / Acero / Aço 39NiCrMo3 UNI 7845 (1.6511)

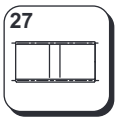


**154-3094**

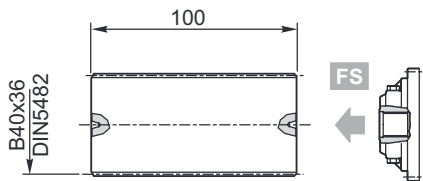


Materiale / Material / Material  
 Matériau / Material / Material  
 Acciaio / Steel / Stahl / Acier / Acero / Aço  
 39NiCrMo3 UNI 7845 (1.6511)

	A	B	C	D	E	F1	F2	G1	G2	N	m	z	x	H	Dp	De	Code
MS	53	46 F6	DIN5482 A40x36	40 F6	50	2	7.5	7	21	47.5	4	15	0.5	44.5	60	69.8	154-3072
	53	46 F6	DIN5482 A40x36	40 F6	50	2	7.5	7	21	47.5	4	32	0	44.5	128	135	154-3104
	53	46 F6	DIN5482 A40x36	40 F6	50	2	7.5	7	21	47.5	6	12	0.25	44.5	72	84.8	154-3073
	53	46 F6	DIN5482 A40x36	40 F6	50	2	7.5	7	21	47.5	5	14	0.5	44.5	70	84	154-2709
	53	46 F6	DIN5482 A40x36	40 F6	50	2	7.5	7	21	47.5	6	24	0	44.5	144	154	154-2285
	53	46 F6	DIN5482 A40x36	40 F6	50	2	7.5	7	21	47.5	8	16	0.25	44.5	128	145	154-2707

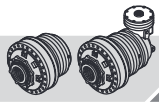


Kg 0.9

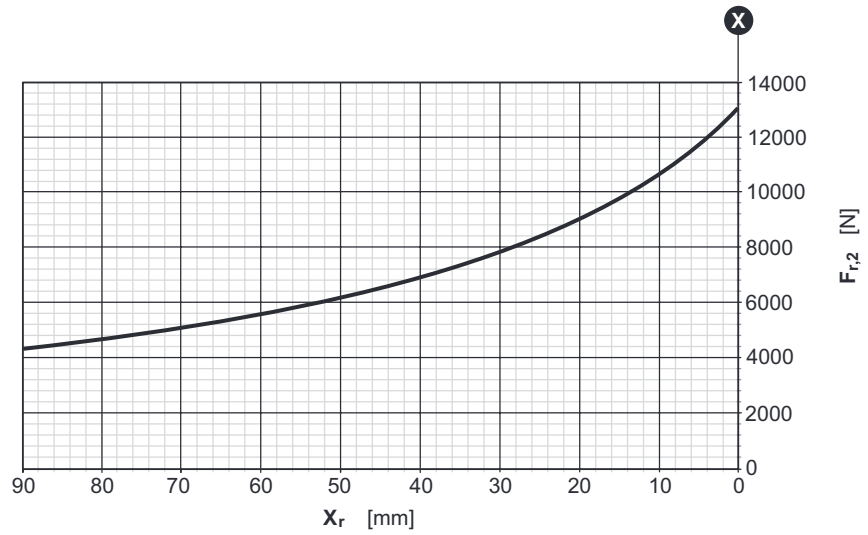
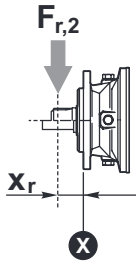


**154-3050**

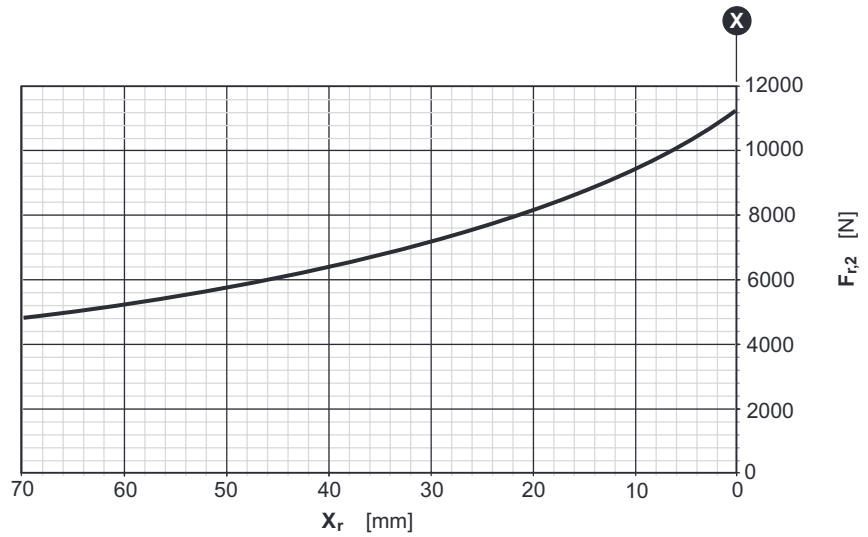
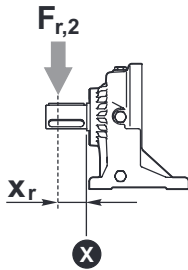
Materiale / Materiale / Material  
 Matériau / Material / Material:  
 Acciaio / Steel / Stahl / Acier / Acero / Aço  
 39NiCrMo3 UNI 7845 (1.6511)



RR	105	..	<b>MS</b>
RA			<b>MC</b>



RR	105	..	<b>UC</b>
RA			



Fattore correttivo  $k_{r2}$  /  $k_{r2}$  Corrective coefficient / Korrekturfaktor  $k_{r2}$   
 Facteur correctif  $k_{r2}$  / Factor de corrección  $k_{r2}$  / Fator corretivo  $k_{r2}$

