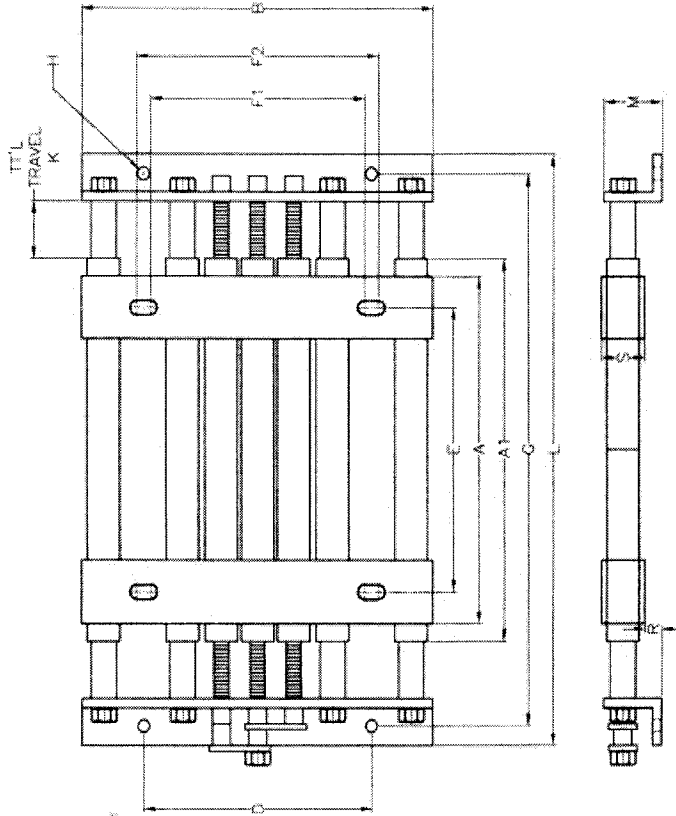
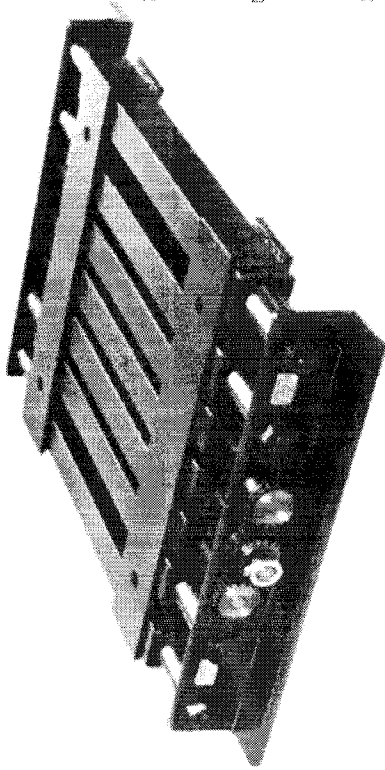
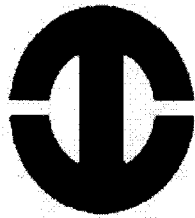


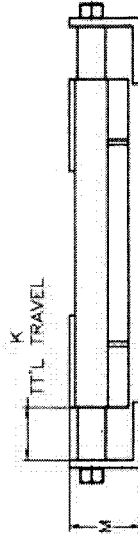
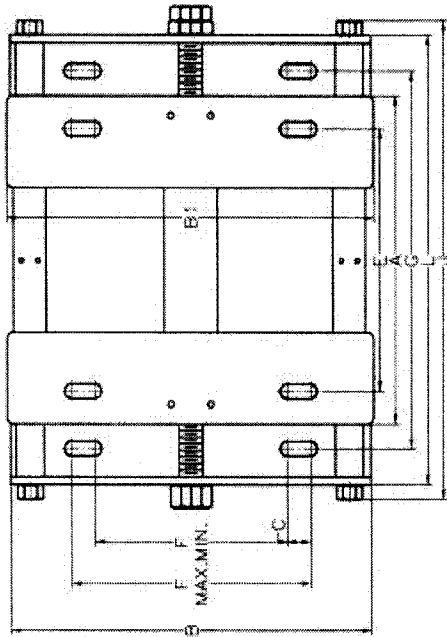
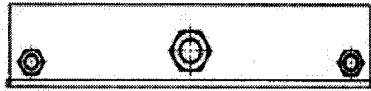
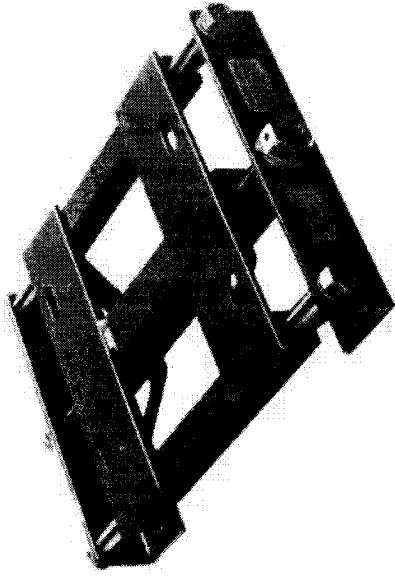
# The Series DD-1100 Heavy Duty "Automatic"® Motor Base



Overly Hautz Part #	IEC Frame Equivalent	Capacity kw @ 1800 or Equivalent	Minimum Pulley Diameter	A	A1	B	D	E	F1	F2	G	H	K	L	M	R	S	Weight (kg)
DD1113	132S/132M	7	102	267	333	337	159	216	140	178	552	10	149	610	83	19	64	27
DD1121	160M/160L	15	114	318	384	419	241	254	210	254	629	14	175	686	92	22	70	34
DD1123	180M/180L	22	140	356	413	448	260	279	241	279	660	14	178	718	94	21	73	41
DD1125	200M/200L	37	178	406	464	495	279	318	267	305	724	17	171	787	105	32	73	70
DD1127	225S/225M	56	229	457	514	508	305	356	286	311	775	17	171	838	105	32	73	84
DD1129	250S/250M	75	254	508	572	565	330	406	311	349	838	21	178	902	110	27	83	111
DD1131	280S/280M	112	279	559	616	632	400	457	368	419	889	21	184	953	106	30	76	145



# The 600 Series "Automatic"<sup>®</sup> Motor Base



Overly Hautz Part #	IEC Frame Equivalent	Max Motor Wt. (kg)	Minimum Pulley Diameter	A	B	B1	C	E	Fmin	Fmax	G +/-	H	J	K	L	M	Weight (kg)
605	90S/90L	41	51	178	210	216	16	140	98	130	1/32	10	297	76	264	48	5
M605	100L	50	64	199	238	244	16	160	111	143	260	10	357	106	318	54	8
607	112M/112S	50	64	229	238	244	16	190	111	143	260	10	357	76	318	54	8
613	132S/132M	79	76	267	289	298	22	216	137	181	298	10	416	89	368	65	14
621	160M/160L	127	102	318	387	394	25	254	206	257	365	14	495	102	435	79	23
623	180M/180L	181	114	356	425	432	25	279	232	283	432	14	562	127	502	81	29