

GIUNTI GO-AMM, GO-AM & GO-AMR

DATI TECNICI

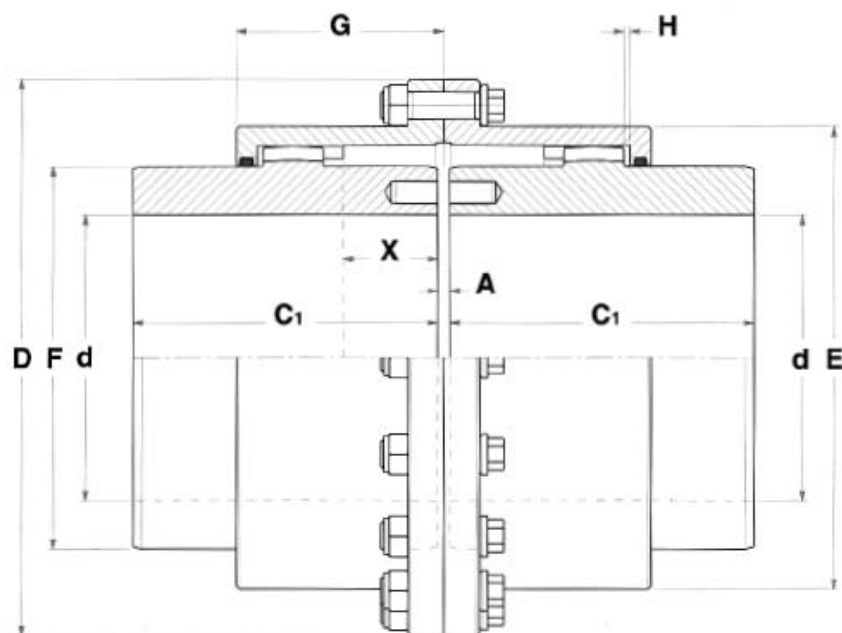


Fig. 05 - Giunto GO-AMM

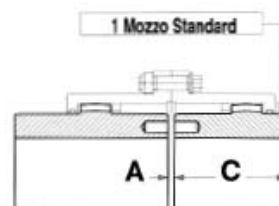


Fig. 06 - Giunto GO-AM

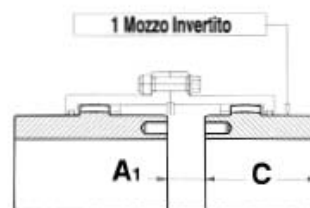


Fig. 07 - Giunto GO-AMR

ESEMPIO DI DESIGNAZIONE:  
GIUNTO GO-AMM GRANDEZZA 6  
**Giunto GO-6AMM**

TAB. 13

| GRANDEZZA | COPIA<br>NOMINALE<br>[kNm]<br><b>Tk</b> | COPIA<br>MAX<br>[kNm]<br><b>Tf</b> | VELOCITÀ<br>MAX<br>[1/min]<br><b>nk</b> | MIN<br>MAX<br>[mm]<br><b>d</b> | DIMENSIONI [mm] |     |                |    |                |       |     |      |     | MASSA<br>① M<br>[Kg] | INERZIA<br>① J<br>[Kgm <sup>2</sup> ] | QUANTITÀ<br>GRASSO<br>[Kg] | RIGIDITÀ<br>① Kx10 <sup>6</sup><br>[Nm/rad] |       |
|-----------|---|------------------------------------|---|--------------------------------|-----------------|-----|----------------|----|----------------|-------|-----|------|-----|----------------------|---------------------------------------|----------------------------|---|-------|
|           |   |                                    |   |                                | D               | C   | C <sub>1</sub> | A  | A <sub>1</sub> | E     | F   | G    | H   |                      |                                       |                            |   | X     |
| 0         | 1.80                                    | 4.32                               | 6000                                    | 12-52                          | 111             | 43  | 105            | 3  | 5              | 82.5  | 69  | 39   | 1.5 | 12                   | 8                                     | 0.007                      | 0.08  | 4.360 |
| 1         | 2.76                                    | 6.62                               | 4620                                    | 18-62                          | 142             | 50  | 115            | 3  | 8              | 104.5 | 85  | 45.5 | 1.5 | 16                   | 13                                    | 0.018                      | 0.09  | 7.310 |
| 2         | 5.55                                    | 13.30                              | 4140                                    | 28-78                          | 168             | 62  | 130            | 3  | 14             | 130.5 | 107 | 59   | 1.5 | 22                   | 23                                    | 0.046                      | 0.16  | 13.45 |
| 3         | 8.70                                    | 20.90                              | 4000                                    | 40-98                          | 200             | 76  | 150            | 5  | 12             | 158.5 | 133 | 68.5 | 2.5 | 26                   | 41                                    | 0.120                      | 0.27  | 24.58 |
| 4         | 14.10                                   | 33.80                              | 3860                                    | 50-112                         | 225             | 90  | 170            | 5  | 24             | 183.5 | 152 | 82.5 | 2.5 | 38                   | 60                                    | 0.229                      | 0.47  | 30.34 |
| 5         | 22.80                                   | 54.70                              | 3720                                    | 60-132                         | 265             | 106 | 185            | 6  | 27             | 211.5 | 178 | 93   | 3   | 45                   | 91                                    | 0.501                      | 0.68  | 47.58 |
| 6         | 34.80                                   | 83.50                              | 3190                                    | 70-156                         | 300             | 120 | 215            | 6  | 32             | 245.5 | 209 | 106  | 3   | 50                   | 141                                   | 1.005                      | 0.93  | 68.27 |
| 7         | 44.00                                   | 105.6                              | 2900                                    | 85-174                         | 330             | 135 | 245            | 8  | 37             | 275   | 234 | 118  | 4   | 58                   | 199                                   | 1.734                      | 1.54  | 97.85 |
| 8         | 69.80                                   | 167.5                              | 2570                                    | 95-190                         | 370             | 150 | 295            | 8  | 50             | 307   | 254 | 138  | 4   | 70                   | 285                                   | 3.029                      | 2.28  | 136.1 |
| 9         | 83.80                                   | 201.2                              | 2330                                    | 110-210                        | 406             | 175 | 300            | 8  | 53             | 335   | 279 | 154  | 4   | 80                   | 362                                   | 4.566                      | 3.10  | 159.9 |
| 10        | 152.0                                   | 364.8                              | 2150                                    | 120-233                        | 439             | 190 | 305            | 8  | 58             | 367   | 305 | 166  | 4   | 86                   | 428                                   | 6.165                      | 3.90  | 203.3 |
| 11        | 203.5                                   | 488.4                              | 1800                                    | 130-280                        | 505             | 220 | 310            | 10 | 72             | 423   | 355 | 193  | 5   | 96                   | 596                                   | 12.55                      | 6.20  | 283.0 |

NOTA 1 - I valori indicati in tabella sono calcolati con mozzi senza foro.